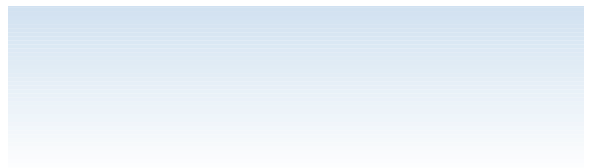






A diagrammatic form consisting of a rectangular box on the left with two horizontal lines extending to the right. Below this box are seven horizontal lines, providing a space for text or a list.

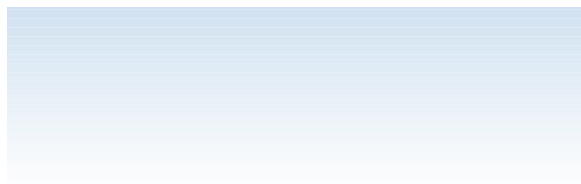
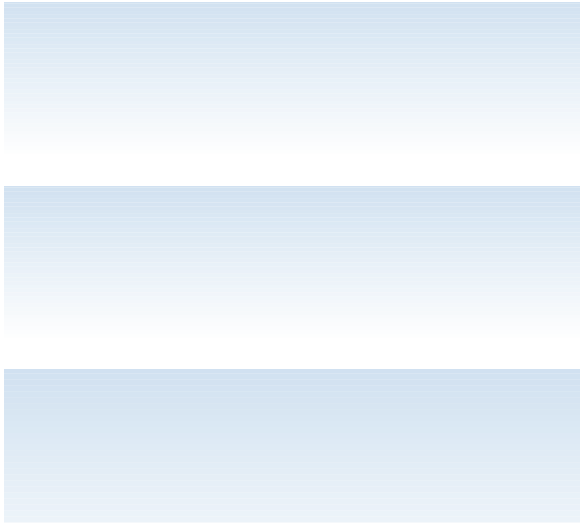


TA h e h he h he
 h e h A e he A e he
 0 0 00 T 0

TA 2 h e h e he h e
 e e e e A e

A 2 20 20 2 2
 ai
 on't kno





nt on .c nt o. .icans sa th ha t ust
an con.i nc in t ach .s ith u, ic schoo a. nts
g.ist .ing n g. at . con.i nc at . o g
g.a vat s an .icans un .
o. ositi a, out th i. t ach .s than . high schoo
g.a vat s an o .icans

T o o. th .icans ou su o. t th i. chi 's
cision to t ach in th u, ic schoo s as a ca. a signi.
icant inc. as .o h n ask . and .

. h n ask i. th . to choos a n in o. o. k
.ou. o. .icans sai that th a. o. so hat
ik to choos t ach ing as a .o. ssion . hi it's i. i
cut to sa ho this co. a. s to oth .o. ssions it
s s to, a. ati high .c ntag gi n th o
g.a s assign to th nation's schoo s ong .i
cans un . th ag o. . a ost ha. sa th ou,
. o. so hat ik to, co t ach .s

.icans a. ss conc n no than th . s
n a. s ago a, out th i. oca u, ic schoo 's i. i cut
hi. ing goo t ach .s

TA . e e h he e he h h
h / he e e e Th
h e he e e e hee /
h e h e / e e h h e he
/ e / e e e

TA h e / / e e he

TA 20 h h e e h
 e h h / e e / e he
 T
 0 0

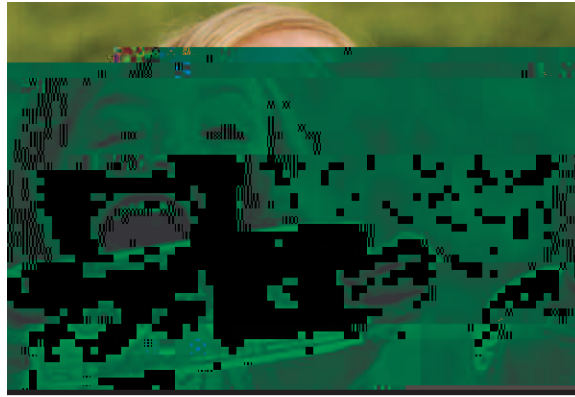
s ha a ha ti
 4 o o s not
 ont kno

TA 2 e e h he e h e h / ee
 0 0 0

s
 4 o
 ont kno

TA 22 e e h e e e h
 h e / e h e e h
 e e / e e e e h
 T
 0

ik
 o hat ik
 4 ot ik
 4 ot at a ik
 ont kno
 ss than on ha .o.



ST E T EA Y I A YE A Y S

The *Time* magazine cost asked how choos i is ci that as a g at u stion so ask icans th i o inion an th n os a o o u u stion i ct ust to a nts to a n i th i th i chi n to o in schoo a so ask a nts a out schoo s ct on th i o st chi s a ning i schoo caus th i chi to co an ag a n an tack th u stion hich is o i o tant o t o a i it as it at s to stu nt succ ss in schoo ina is a u stion that think h s us tt un stan th a u icans ac on in c asing tach a ning ti o s siona o nt as co a to inc asing stu nt a ning ti

Adults had their say about K-12 schools this month, but what do teenagers say?

Next month, hear what Gallup has learned from them

Kaplan

Th to th asons a nts gi o. anting th i
chi toatt n co g a o. o. o.tuniti san

TA 2
/ e

e e e/

TA 0 e e e e /e
/ he e e e he

JON SCHNUR

a_ nts_ _ o_ _ tt_ _

TA h h h e' e e e e e e e
e' e e e e e e e e e e
h e e h he e e he e e e

T
0

tt_ _ a_ .o. o.k.o.co g
ss_ _ a_ .o. o.k.o.co g
va_ _ a_ .o. o.k.o.co g
on't kno

HATEYS H SA ARE TA H I E

inn sota as th .ist stat to autho.iz
u, ic schoo aca i s , tt kno n as chat
schoos an u.ing th nsuing , as chat
schoos ha _ain a ightning .o .o. cont.o .s
a .aious n _ots ocu nt th suc
c ss s an th .ai u. s o. chat _ schoos as an u
cation _o. o tion Th _ a u o has oni
to .ican's attitu s to a chat _ schoos
throughout this ca an th t n ata is un ni
a This a .a a .u stion to ak th cha
t _ schoo issu o. _sona , asking .icans i.
th ou su .ot n u, ic chat _ schoos in th i.
co .uniti s ina u .ing _o ou .a.chi o. u s
tions ask a_nts i.th ou consi _ o ing
th i. chi to a i _ nt schoo

.icans inc. asing , .ac u, ic chat _
schoos n . . . on _a o. chat _ schoos . .st
_as at _a o. a_ o inions inc. as to
u o. tis uni. o. ac. oss s _a og. a hics inc u
ing _s on nt's ag o itica a. iation o. uca
tion an n a ong u, ic schoo a_nts

i ia .a ostt oo.th .icans ou su .ot
an u, ic chat _ schoo in th i. co .uniti s an
. o. .icans sa th ou go so .a as to su
o. t a ag inc. as in th nu , _o. u, ic chat _
schoos o .ating in th _nit _tat s

i.t ight _c nt o. u, ic schoo a_nts sai th
ou k th i. chi _n at th sa _ schoo th no
att n This is a out th sa _ s ons _c i
h n .ist ask th u stion in_ Th _a t o





VIOLETA GARCIA

Parent in Teaching Learning

Professional involvement, strategic assessment to students, instructional tools, constant tuning, social interaction, student host, transition, vision, mission, organizational, using a network to achieve learning in the classroom.

COMMENTARY

Parents are invited to announce to teachers in order to improve instruction. Just as the role of the school is to train the student, parents are also responsible for the child's education. Parents should not just show up for the school sign to ask for a better school, but also should be involved in the learning process.

Learning is a process that is not the solution to increase student achievement. Schools should focus on the structure of the education. The principal in San Francisco is that the superintendent acts to improve the school system again with a focus on the student.

Parents are asking for a change in the schools. The things that are most important in education are the learning outcomes. The school should focus on the learning outcomes that are most important to the teaching practice. Teachers should be trained in the school site in the school district as a whole, not just in the classroom.

Violeta Garcia is a parent liaison for a San Francisco Unified School District and a member of the Board of Directors for Parents for Public Schools, a national advocacy group that works to promote and strengthen public schools.

A e
e
h
e
h h h
e

Parents are asking that the school has an opportunity to have a student host in the classroom.

Parents are asking that the school has an opportunity to have a student host in the classroom.

Parents are asking that the school has an opportunity to have a student host in the classroom.



Thinkstock photo

TA
e
he e e e e h
h e 200
A ee
2 ee

know the child's achievement in high school.

know the child's achievement in high school.

know the child's achievement in high school.

know the child's achievement in high school.

know the child's achievement in high school.

know the child's achievement in high school.



HY IT ATTE 3S

• o cting an ana zing th o inions o ho
icans i th v ic schoo s is an i o tant i st st
in gui ing ucato s an o ic ak s to a aking
/ schoo s, tt ut th a ca ats to consi
o ti s i can v ic o inion o i sc a i
ction o chang o a ana zing this a s
o ing ata sugg sts that icans cogniz that
schoo s n th high st va it t ach s ossi an
that o i ing thos t ach s shou a # io it
icans i su o t og a s that in st in i
o t ach ski s Th i su o t og a s that
c uit th st can i at s an that t ain cu nt an
os cti t ach s to us th st t aching a
oach s n th i su o t o t sto tain th st
t ach s an is iss thos ho a n t ski o suit
o th task

n oth situations i can v ic o inion s s
cons ati sugg sting that icans a too
i ing to acc t th status uo u cation o s
a th n ik to iscount v ic o inion assu ing
that th i can v ic ith o sn t un stan o
o sn t ca

